



PRODUCT DATASHEET PIXEL

REAL TIME WIRELESS TEMPERATURE & HUMIDITY DATALOGGER

PIXEL W100

Warehouse monitoring solution

Use Pixel solution to **Monitor your warehouses without interruption.** Charge it over night, assign it to chamber and enjoy live feed of temperature and humidity from your storage chambers **for a whole year.**

Get all data from your warehouse network to a single screen using **Pixel webportal** (CFR21). Provide role based login access to your team members and clients.

Experience the seamless data flow for superior quality and hassle free compliance.



Temperature & Humidity Monitoring



Pdf & CSV Reports



Instant SMS & Email Notifications



Access anytime, anywhere through Web-App



24x7 remote monitoring



21 CFR Part 11 Compliant



Product Anatomy



- 01. USB-C Charging port
- 02. LCD Screen
- 03. Button
- 04. QR Code
- 05. Battery Charge Health (Blinks when battery is low)
- 06. WiFi Connection (Stable when connected)
- 07. Degree Celsius
- 08. Relative Humidity
- 09. Temperature/Humidity Reading

Visit us at www.adaptloggers.com

For further queries, please drop a mail to info@adaptideations.com or call us at +91-4045207973 **01**



REAL TIME WIRELESS TEMPERATURE AND HUMIDITY DATALOGGER

PIXEL W100



Easy to use

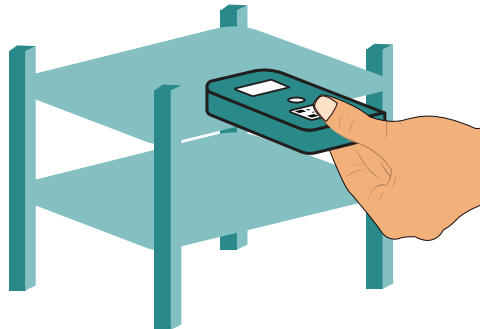
CONFIGURE

Configure the datalogger according to your requirement using ADAPT's platform.



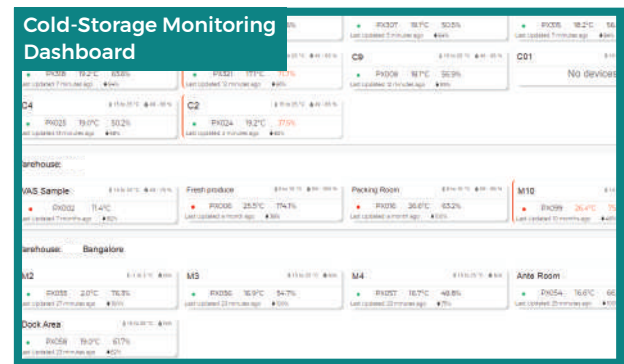
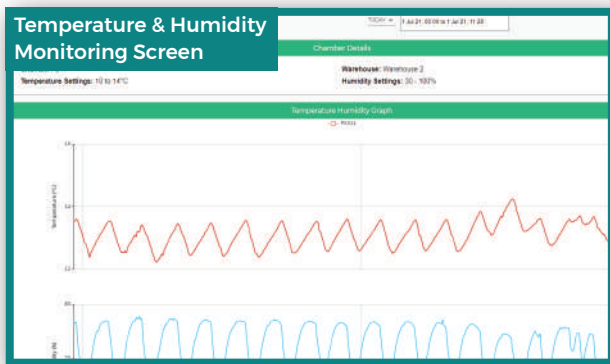
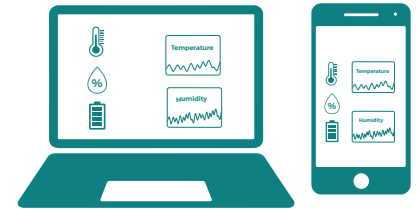
PAIR

Place the device in your cold chamber and pair it on the web portal.



MONITOR

Monitor your cold storage on our Web App.



Technical Specifications

Dimensions (L x W x H):	112mm x 62mm x 30mm
Weight:	220g
Battery:	Li-ion, 8700mAh, Rechargeable
Charging Voltage:	5V DC, USB Type C
Charging Time:	Upto 16 hours for full charge
Battery Charging Life:	1 year @ 60 mins sending interval
Reading Interval:	1 min (configurable)
Reading Transmission:	15 min (configurable)
WiFi:	2.4 GHz
Temperature Sensor Type:	Digital
Temperature Range:	-30° C to +60° C
Temperature Accuracy:	+0.5°C
Temperature Calibration:	Factory Calibrated

Probe Support	No
Humidity Sensor Type:	Digital
Humidity Range:	0% to 99% RH
Humidity Accuracy:	+/- 3.5% RH
Humidity Calibration:	Factory Calibrated
Standards:	FCC/CE Compliance
Water Resistance:	IP64
Compliance:	CFR21, EN12830
Violations:	All Violations are logged as events on web-portal
Notifications:	SMS, Email, Push
Data formats and graphs:	Graphs, PDFs, CSVs (downloadable from portal)
Data storage on Device:	43,200 readings (1 month @ 1 min reading)

Scan to know more about PIXEL W100
Or go to docs.adaptloggers.com/pixelw100



Designed, developed and manufactured in India.

For further queries, please drop a mail to info@adaptideations.com or call us at +91-4045207973