



## PRODUCT DATASHEET PIXEL

# REAL TIME WIRELESS TEMPERATURE DATALOGGER

## PIXEL W300

### Warehouse monitoring solution

Use Pixel solution to **Monitor your warehouses without interruption.** Charge it over night, assign it to chamber and enjoy live feed of temperature from your storage chambers **for a whole year.** Get all data from your warehouse network to a single screen using **Pixel webportal** (CFR21). Provide role based login access to your team members and clients. Experience the seamless data flow for superior quality and hassle free compliance.



Temperature Monitoring



Pdf & CSV Reports



Instant SMS & Email Notifications



Access anytime, anywhere through Web-App



24x7 remote monitoring



21 CFR Part 11 Compliant



### Product Anatomy



01. USB-C Port for Probe & Charging

02. LCD Screen

03. Button

04. QR Code

05. Probe

06. Battery Charge Health (Blinks when battery is low)

07. WiFi Network (Stable when connected)

08. Degree Celsius

09. Temperature Reading



Visit us at [www.adaptloggers.com](http://www.adaptloggers.com)

For further queries, please drop a mail to [info@adaptideations.com](mailto:info@adaptideations.com) or call us at +91-4045207973

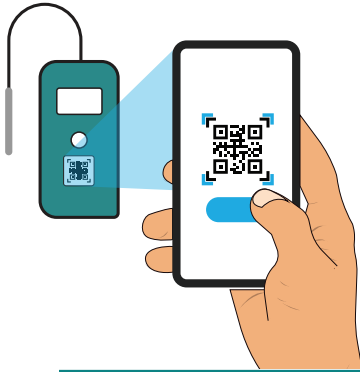
# REAL TIME WIRELESS TEMPERATURE DATALOGGER PIXEL W300



## Easy to use

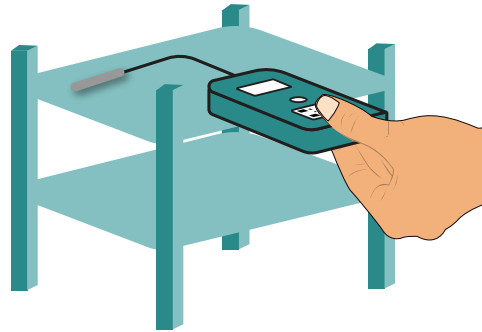
### CONFIGURE

Configure the datalogger according to your requirement using ADAPT's platform.



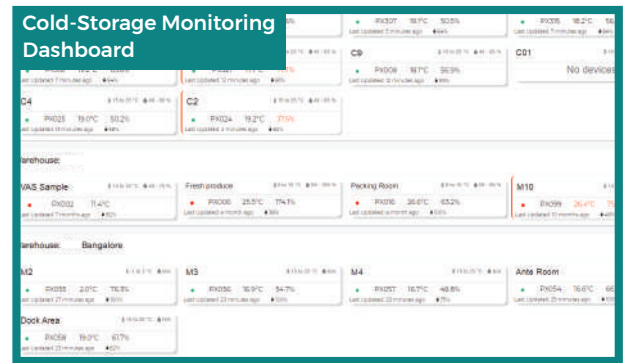
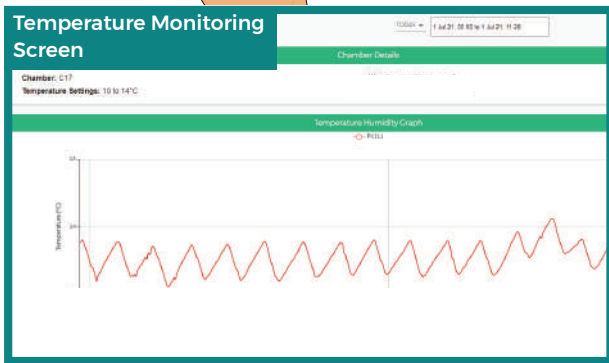
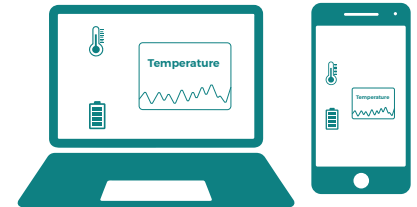
### PAIR

Place the device in your cold chamber and pair it on the web portal.



### MONITOR

Monitor your cold storage on our Web App.



## Technical Specifications

**Dimensions (L x W x H):** 112mm x 62mm x 30mm

**Weight:** 220g

**Battery:** Li-ion, 8700mAh, Rechargeable

**Charging Voltage:** 5V DC, USB Type C

**Charging Time:** Upto 16 hours for full charge

**Battery Charge Life:** 1 year @ 60 mins sending interval

**Reading Interval:** 1 min (configurable)

**Reading Transmission:** 15 min (configurable)

**WiFi:** 2.4 GHz

**Temperature Sensor Type:** Digital

**Temperature Range:** -100° C to +100° C

**Temperature Accuracy:** +-0.5°C

**Temperature Calibration:** Factory Calibrated

**Probe Support** Yes (3m)

**Standards:** FCC/CE Compliance

**Water Resistance:** IP64

**Compliance:** CFR21, EN12830

**Violations:** All Violations are logged as events on web-portal

**Notifications:** SMS, Email, Push

**Data formats and graphs:** Graphs, PDFs, CSVs (downloadable from portal)

**Data storage on Device:** 43,200 readings (1 month @ 1 min reading)

Scan to know more about PIXEL W300  
Or go to [docs.adaptloggers.com/pixelw300](https://docs.adaptloggers.com/pixelw300)



*Designed, developed and manufactured in India.*

For further queries, please drop a mail to [info@adaptideations.com](mailto:info@adaptideations.com) or call us at +91-4045207973 **02**